

Arboricultural Appraisal Raby Park Road, Neston

1.1. This drawing presents an overview of the existing trees within influencing distance of the survey area. It also summarises the results of desktop searches for any designations, legal and regulatory restrictions or special status of relevance to arboriculture.

Survey Area

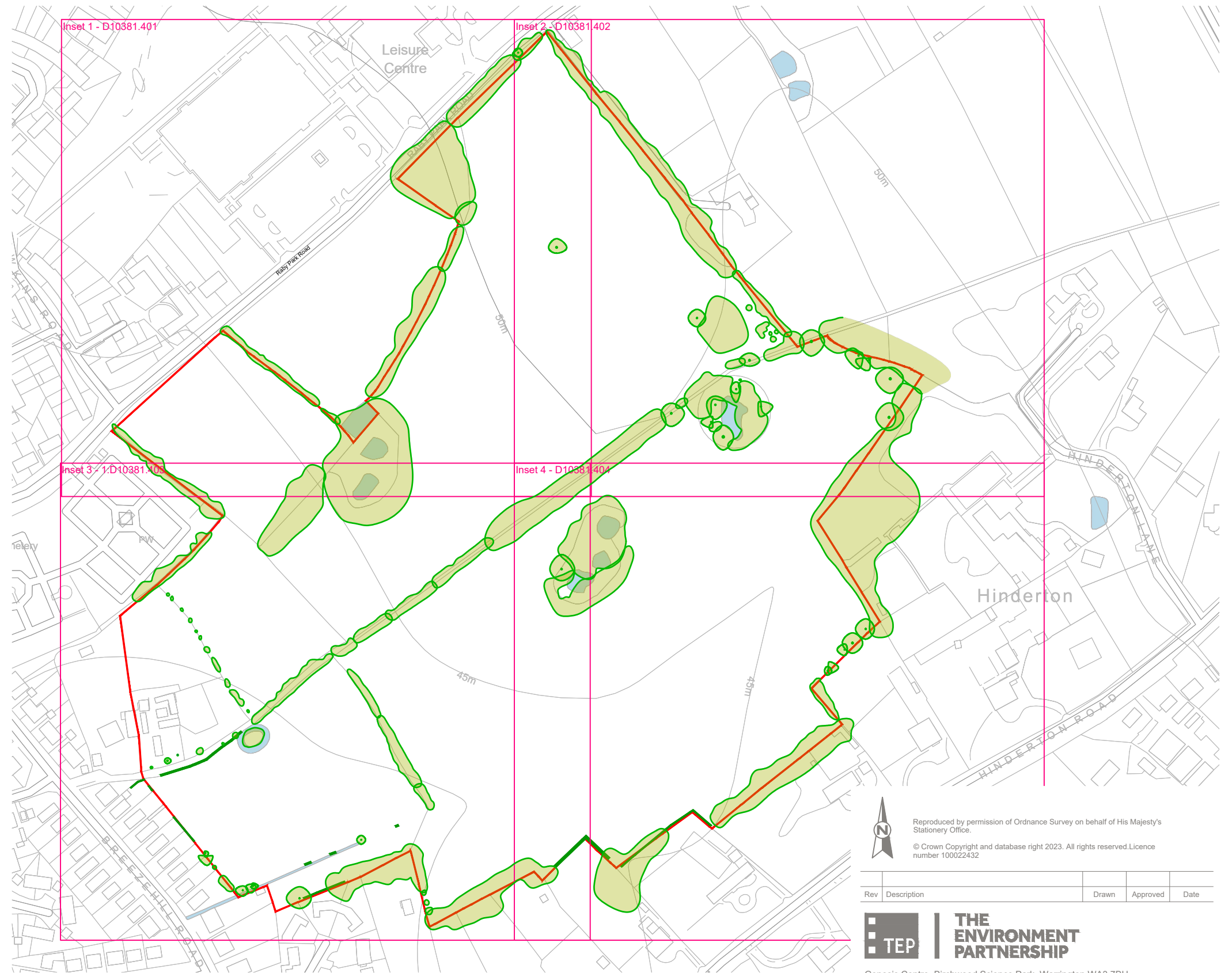
1.2. The area of interest comprises a network of field parcels divided by outgrown hedgerows and linear groups of trees. The site is bordered by Raby Park Road to the north, residential properties to the south and west, and pastoral field parcels to the east.

Survey results

- 1.3. 31 individual trees, 41 groups of trees, 1 woodland compartment and 8 hedges were recorded within influencing distance of the site.
- 1.4. Trees form areas of continuous canopy cover around the boundaries of the site as well as in clusters around ponds. Large, mature trees in variable condition are present throughout the site. Some of the large areas of tree cover are in third party ownership.
- 1.5. Trees of particular note include a mature white poplar (T10) within the belt of trees dividing the site in half, a collection of mature oaks towards the eastern end of the site (T14, T18, T21, T24 and T25), and trees forming a group around a pond (G16)
- 1.6. Woodlands and areas of continuous canopy cover are present throughout the site and are generally moderate quality with good species diversity. In the long term these areas are likely to develop more woodland structure.
- 1.7. Trees in the south-western part of the site are suffering from a combination of waterlogging and heavy compaction from livestock and tend to be rather sparse and fragmentary.
- 1.8. Trees have been categorised in accordance with BS 5837 to describe their arboricultural, landscape or cultural qualities: A (high quality), B (moderate quality) C (low quality) and U (unsuitable for retention). The categorisation of tree quality allows a weighting to be given to each tree within the context of proposed development but is not prescriptive. Hedgerows are not categorised.
- 1.9. A Root Protection Area (RPA) has been calculated in accordance with BS 5837. This is based on each tree's stem diameter at 1.5 metres and has been adjusted where necessary to most accurately represent the likely spread of roots in consideration of prevailing conditions. The RPA represents the minimum area around each tree that must be left undisturbed to ensure its survival.
- 1.10. Feature locations, their quality categories, canopy spreads and root protection areas are shown on Insets 1 to 4. All arboricultural information recorded during the survey is presented at Appendix A.

Desktop Searches

- 1.11. Cheshire West and Chester Council's online mapping confirmed that trees to the east and south of the site are covered by Tree Preservation Order (Ref: X/04/20220/ORD and X/03/20219/ORD).
- 1.12. Natural England's Ancient Woodland Inventory (Provisional) for England contains no records for the site.
- 1.13. The site survey identified 2 veteran trees (T14 and T18) which could be affected by development of the site, buffer zones are shown on the Insets. Several other trees have varying assemblages of veteran features that although do not meet the criteria to be assessed as such are valuable individuals with the potential to become veteran trees in the future.
- 1.14. The site is within the Mersey Community Forest.
- 1.15. There are mapped arboreal Habitats of Principal Importance (Deciduous Woodland, Wood Pasture and Parkland, and Traditional Orchard) adjacent to the site. No hedgerows meet the description of HoPI Hedgerow.
- 1.16. No assessment of the presence of protected species has been made during the production of this drawing. Features of possible interest that were observed incidentally during the tree survey are recorded in Appendix A.



KEY

[This drawing must be reproduced in colour]

- Existing Trees
- Existing Hedgerow
- Survey Boundary
- Inset frame



Reproduced by permission of Ordnance Survey on behalf of His Majesty's Stationery Office.
© Crown Copyright and database right 2023. All rights reserved. Licence number 100022432

Rev	Description	Drawn	Approved	Date



Genesis Centre, Birchwood Science Park, Warrington WA3 7BH
Tel 01925 844004 e-mail tep@tep.uk.com www.tep.uk.com

Project
Cheshire West Site Promotion - Raby Park Road, Neston

Title
Arboricultural Appraisal - Overview

Drawing Number
D10381.400

Drawn	Checked	Approved	Scale	Date
JGS	AAB	FBH	1:3,000 @ A3	27/02/2024



KEY

[This drawing must be reproduced in colour]

- T1/G1/W1 Trees
- H1 Hedgerow
- Root Protection Area (RPA)
- Survey Boundary

Tree Quality Categorisation

(Based on BS 5837:2012 Trees in relation to design, demolition and construction - Recommendations)

- Category A (High quality)
- Category B (Moderate quality)
- Category C (Low quality)
- Category U (Unsuitable for retention)
- Hedgerow (Not categorised)

NOTES:

This drawing should be read in conjunction with the respective Arboricultural Survey Data (Appendix A).

All tree and hedgerow locations and canopy extents are estimated through a combination of on-site observation and aerial photography.



Reproduced by permission of Ordnance Survey on behalf of His Majesty's Stationery Office.

© Crown Copyright and database right 2023. All rights reserved. Licence number 100022432

Rev	Description	Drawn	Approved	Date



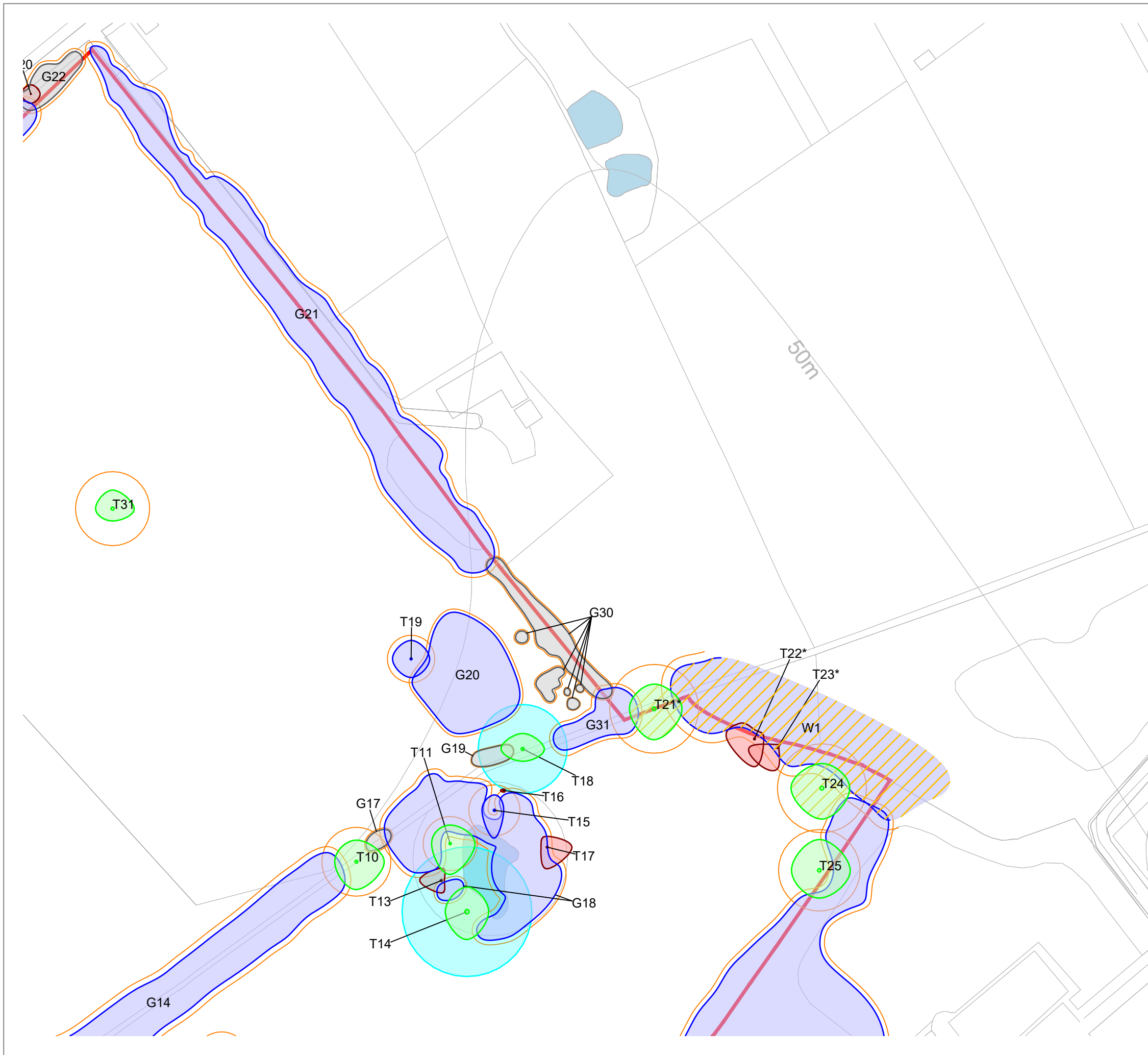
Genesis Centre, Birchwood Science Park, Warrington WA3 7BH
 Tel 01925 844004 e-mail tep@tep.uk.com www.tep.uk.com

Project
Cheshire West Site Promotion - Raby Park Road, Neston

Title
Arboricultural Appraisal - Inset 1 of 4

Drawing Number
D10381.401

Drawn	Checked	Approved	Scale	Date
JGS	AAB	FBH	1:1,250 @ A3	27/02/2024



KEY

[This drawing must be reproduced in colour]

- T1/G1/W1 Trees
- H1 Hedgerow
- Root Protection Area (RPA)
- Survey Boundary
- Tree Preservation Order
- Veteran Tree Buffer

Tree Quality Categorisation

(Based on BS 5837:2012 Trees in relation to design, demolition and construction - Recommendations)

- Category A (High quality)
- Category B (Moderate quality)
- Category C (Low quality)
- Category U (Unsuitable for retention)
- Hedgerow (Not categorised)

NOTES:

This drawing should be read in conjunction with the respective Arboricultural Survey Data (Appendix A).

All tree and hedgerow locations and canopy extents are estimated through a combination of on-site observation and aerial photography.



Reproduced by permission of Ordnance Survey on behalf of His Majesty's Stationery Office.

© Crown Copyright and database right 2023. All rights reserved. Licence number 100022432

Rev	Description	Drawn	Approved	Date



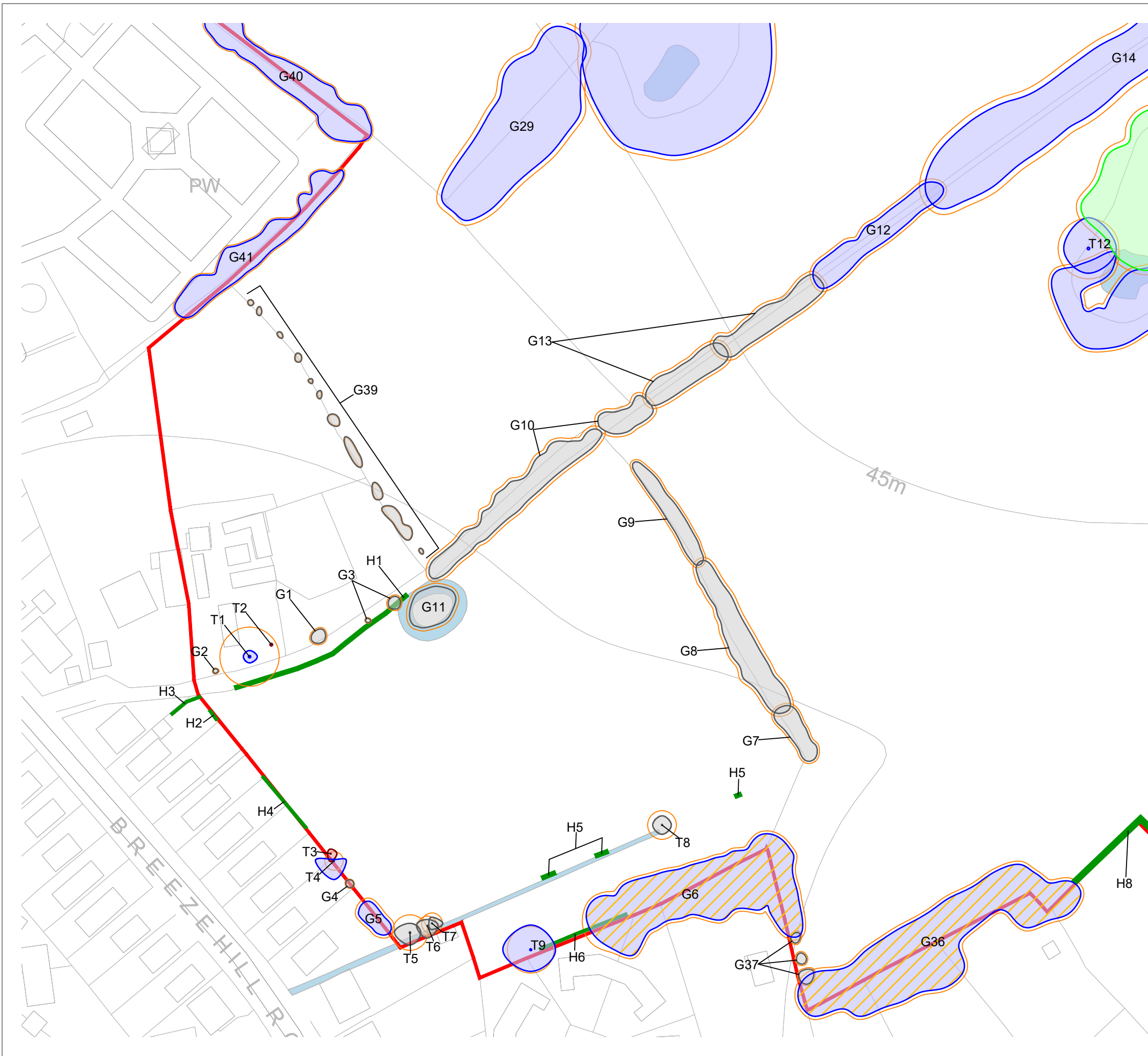
Genesis Centre, Birchwood Science Park, Warrington WA3 7BH
Tel 01925 844004 e-mail tep@tep.uk.com www.tep.uk.com

Project
Cheshire West Site Promotion - Raby Park Road, Neston

Title
Arboricultural Appraisal - Inset 2 of 4

Drawing Number
D10381.402

Drawn	Checked	Approved	Scale	Date
JGS	AAB	FBH	1:1,250 @ A3	27/02/2024



KEY

[This drawing must be reproduced in colour]

- T1/G1/W1 Trees
- H1 Hedgerow
- Root Protection Area (RPA)
- Survey Boundary
- Tree Preservation Order

Tree Quality Categorisation

(Based on BS 5837:2012 Trees in relation to design, demolition and construction - Recommendations)

- Category A (High quality)
- Category B (Moderate quality)
- Category C (Low quality)
- Category U (Unsuitable for retention)
- Hedgerow (Not categorised)

NOTES:

This drawing should be read in conjunction with the respective Arboricultural Survey Data (Appendix A).

All tree and hedgerow locations and canopy extents are estimated through a combination of on-site observation and aerial photography.



Reproduced by permission of Ordnance Survey on behalf of His Majesty's Stationery Office.

© Crown Copyright and database right 2023. All rights reserved. Licence number 100022432

Rev	Description	Drawn	Approved	Date



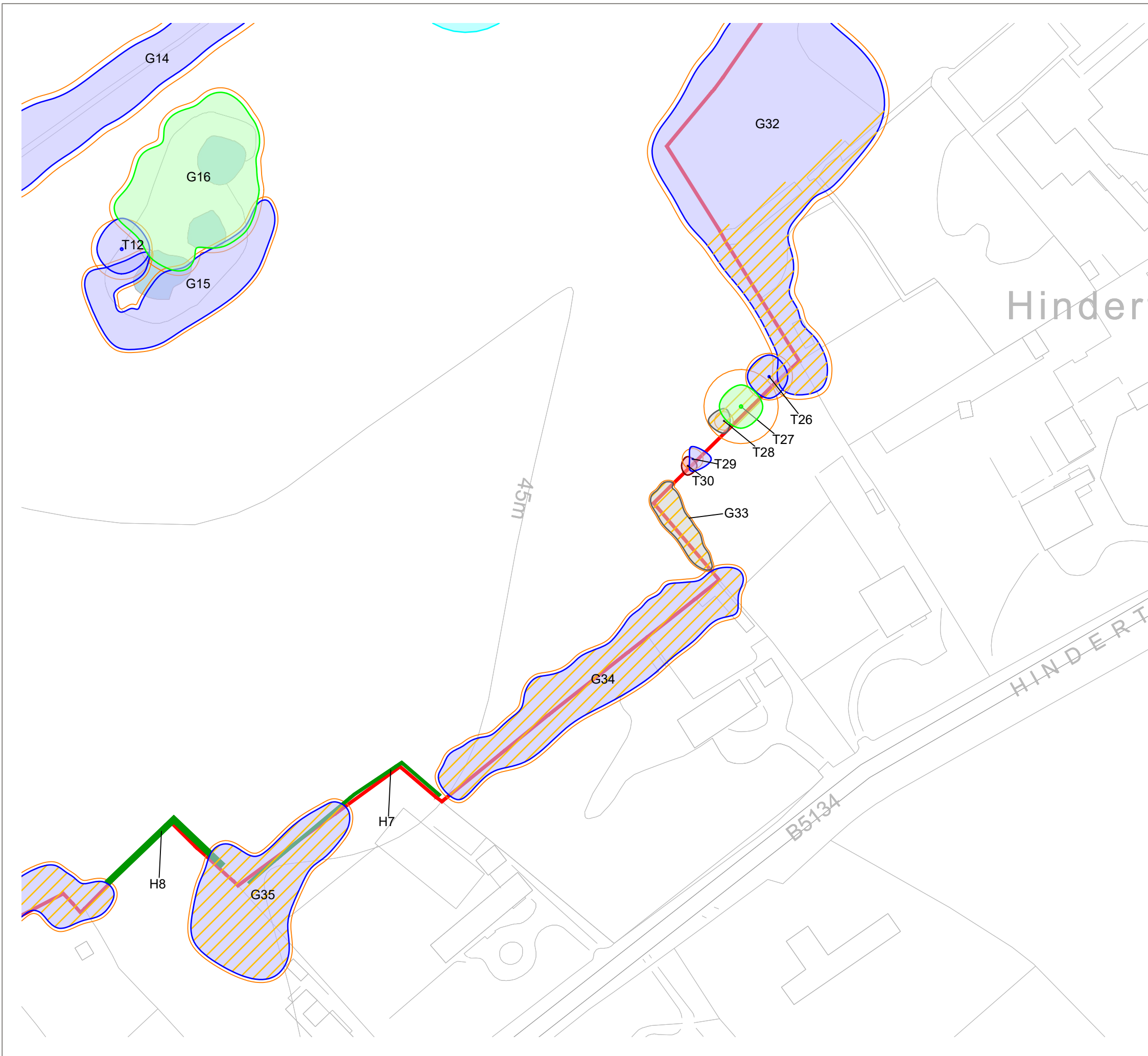
Genesis Centre, Birchwood Science Park, Warrington WA3 7BH
Tel 01925 844004 e-mail tep@tep.uk.com www.tep.uk.com

Project
Cheshire West Site Promotion - Raby Park Road, Neston

Title
Arboricultural Appraisal - Inset 3 of 4

Drawing Number
D10381.403

Drawn	Checked	Approved	Scale	Date
JGS	AAB	FBH	1:1,250 @ A3	27/02/2024



KEY

[This drawing must be reproduced in colour]

- T1/G1/W1 Trees
- H1 Hedgerow
- Root Protection Area (RPA)
- Survey Boundary
- Tree Preservation Order

Tree Quality Categorisation

(Based on BS 5837:2012 Trees in relation to design, demolition and construction - Recommendations)

- Category A (High quality)
- Category B (Moderate quality)
- Category C (Low quality)
- Category U (Unsuitable for retention)
- Hedgerow (Not categorised)

NOTES:

This drawing should be read in conjunction with the respective Arboricultural Survey Data (Appendix A).

All tree and hedgerow locations and canopy extents are estimated through a combination of on-site observation and aerial photography.



Reproduced by permission of Ordnance Survey on behalf of His Majesty's Stationery Office.

© Crown Copyright and database right 2023. All rights reserved. Licence number 100022432

Rev	Description	Drawn	Approved	Date



THE ENVIRONMENT PARTNERSHIP

Genesis Centre, Birchwood Science Park, Warrington WA3 7BH
Tel 01925 844004 e-mail tep@tep.uk.com www.tep.uk.com

Project

Cheshire West Site Promotion - Raby Park Road, Neston

Title

Arboricultural Appraisal - Inset 4 of 4

Drawing Number

D10381.404

Drawn	Checked	Approved	Scale	Date
JGS	AAB	FBH	1:1,250 @ A3	27/02/2024

APPENDIX A: Arboricultural Survey Data Sheets



Surveyor Angus Blankenstein
 Survey Date 22.02.24
 Site Raby Park Road, Neston
 Drawing Ref D10381.400

Italicised Feature Ref: Inspection of this feature was restricted
Italicised Values: Feature value was estimated

Ref	Species	Height	Canopy Ground Clearance	Stem Diameter (or range)	No. of stems/ individuals	Crown Spread North	Crown Spread South	Crown Spread East	Crown Spread West	Lowest Branch Height	Lowest Branch Direction	Maturity	Condition	Comments on form, condition, health and significant defects	Management recommendations in current context	BS 5837 Quality Category	Estimated Remaining Contribution
		(m)	(m)	(mm)	arising below 1.5m	(m)	(m)	(m)	(m)	(m)	(N,S,E,W)	Young, Middle Age, Mature	Good, Fair, Poor, Veteran			A,B,C,U (1,2,3)	Long, Medium, Short, Very Short
Trees																	
T1	Lombardy poplar	15.0	1.5	800	1	2.0	2.0	2.5	2.0	1.5	S	Mature	Good	Third party tree.		B ,1	Long
T2	Horse chestnut	6.0	2.0	860	1	0.0	0.0	0.0	0.0	3.0	W	Mature	Fair	Third party tree. Leaf miner, quite extensive and diminishing canopy aesthetic; horse chestnut bleeding canker symptoms. Felled at 6m with no canopy		B ,1	Medium
T3	Common hawthorn	5.0	2.0	250	1	1.5	2.5	2.0	1.0	2.0	N	Middle Age	Poor	Third party tree, predominantly dead.		U	Very Short
T4	Wild cherry	7.0	1.5	250	1	0.5	6.0	4.0	6.0	2.0	SW	Middle Age	Good	Third party tree; healthy; canopy suppressed to north-east.		B ,1	Long
T5	Common hawthorn	6.0	0.5	480	1	3.0	4.0	3.5	5.0	0.5	S	Mature	Fair	Canopy decline, reasonable condition overall; small diameter deadwood posing low risk.		C ,1	Medium
T6	Sycamore	11.0	2.5	260	1	2.0	4.0	3.5	3.5	2.5	SW	Middle Age	Good	Self seeded tree on field boundary.		C ,1	Long
T7	Common hawthorn	5.0	0.5	281	4	2.0	2.0	3.5	1.0	1.0	N	Middle Age	Fair	Unremarkable self seeded tree growing beneath and suppressed by larger tree.		C ,1	Medium
T8	English holly	7.0	2.5	387	15	3.0	3.0	3.0	3.0	2.5	N	Middle Age	Good	Unremarkable tree on edge of drainage ditch; healthy; browsing damage to lower stems.		C ,1	Long
T9	Common beech	9.0	2.0	630	1	8.0	7.0	8.0	9.0	2.0	N	Mature	Good	Squat, rounded canopy form, appears due to previous crown reduction; limited visibility.		B ,1	Long
T10	White poplar	20.0	1.0	930	1	7.0	9.0	9.0	7.0	4.0	W	Mature	Good	Large tree within wider shelter belt; woodpecker holes along co-dominant stem to north, habitat potential and potential decay column within stem; currently posing low risk; wide spreading canopy biased south-east; healthy, prominent tree; ground suckers observed to north and south.		A ,1, 2, 3	Long
T11	Common beech	24.0	0.0	730	1	6.0	10.0	8.0	6.0	4.0	NW	Mature	Good	Large, mature tree within woodland type copse around pond; limited visibility from ground but appears in excellent health and condition.		A ,1	Long
T12	Turkey oak	21.0	0.0	820	1	10.0	8.0	9.0	8.0	3.0	N	Mature	Fair	Large bracket of Ganoderma resinaceum wood decay fungi at ground level to west; extent of internal decay unknown; active stem bleeds around bracket and adjacent buttress roots, potential early stage development of Bulgaria canker (Bulgaria inquinans); stem leans east towards woodland; canopy healthy; tree poses low risk at present; potential source of future deadwood habitat.	Carry out routine tree risk inspection every 3 years.	B ,1, 3	Medium
T13	Common beech	13.0	2.0	700	1	4.0	4.0	1.0	7.0	5.0	W	Mature	Poor	Largely dead standing tree with functioning lower tertiary branches; valuable source of standing deadwood habitat.		U	Very Short
T14	Pedunculate oak	17.0	1.0	1400	1	8.0	9.0	7.0	7.0	2.0	S	Mature	Veteran	Large, mature tree at edge of pond; notable for its size, age and condition; large canker on lower trunk to north; occasional large diameter deadwood posing low risk; limited access around base; stag headed form developing; cavities and crevices presenting bat roost potential. Growing in pond when water levels high		A ,1, 2, 3	Long
T15	Common beech	17.0	0.5	690	1	5.0	9.0	3.0	4.0	3.0	W	Mature	Fair	Large decay column at ground level to 2m height in trunk to west; canopy healthy; decay appears quite extensive, full extent unknown; posing low risk at present.	Tree risk inspection every 3 years.	B ,1, 3	Medium
T16	Sycamore	8.0	0.0	480	1	0.5	0.5	0.5	1.0	3.0	W	Middle Age	Poor	Standing dead, decaying stem with basal epicormic growth; woodpecker holes and deadwood habitat; auricularia auricula-judae present on dead parts.		U	Very Short
T17	Common ash	18.0	4.0	600	1	3.5	7.0	8.0	2.0	6.0	SE	Mature	Poor	Tree in decline due to Chalara ash dieback disease; posing low risk at present.		U	Very Short
T18	Pedunculate oak	10.0	1.0	960	1	5.0	4.0	7.0	7.0	2.0	S	Mature	Veteran	Portion of crown dead with stag headed form; large diameter deadwood, posing low risk currently; crown retrenchment with developed lower canopy in good health; many cavities and crevices presenting habitat and bat roosting potential; notable tree for its age, size and condition.		A ,1, 2, 3	Long
T19	Pedunculate oak	8.0	0.5	640	1	1.0	6.0	6.0	6.0	2.0	NW	Mature	Good	Open grown tree to edge of willow stand; healthy; slightly unbalanced form.		B ,1	Long
T20	Sycamore	8.0	5.0	220	1	3.0	3.0	3.0	3.0	4.0	S	Middle Age	Dead	Standing dead roadside tree.	Fell, low priority.	U	Very Short
T21	Pedunculate oak	14.0	2.0	1200	1	8.0	10.0	9.0	8.0	3.0	S	Mature	Good	Large open grown tree with notable stem girth; potential future veteran tree; healthy; bat roost potential.		A ,1, 2, 3	Long
T22	Sycamore	12.0	5.0	600	1	0.0	0.0	0.0	0.0	5.0	W	Mature	Dead	Largely dead standing tree. Totally failed		U	Very Short
T23	Common beech	9.0	4.0	600	1	1.0	7.0	0.5	9.0	4.0	W	Mature	Poor	Largely dead standing tree.		U	Very Short
T24	Pedunculate oak	16.0	1.0	1200	1	8.0	10.0	9.0	10.0	3.0	S	Mature	Good	Potential future veteran tree; habitat value; bat roost potential.		A ,1, 2, 3	Long
T25	Pedunculate oak	16.0	3.0	1100	1	10.0	9.0	10.0	9.0	3.0	W	Mature	Good	Open grown oak at edge of field; notable stem girth; branch and limb failures; bat roost potential; potential veteran tree.		A ,1, 2, 3	Long

APPENDIX A: Arboricultural Survey Data Sheets



Surveyor Angus Blankenstein
 Survey Date 22.02.24
 Site Raby Park Road, Neston
 Drawing Ref D10381.400

Italicised Feature Ref: Inspection of this feature was restricted
Italicised Values: Feature value was estimated

Ref	Species	Height	Canopy Ground Clearance	Stem Diameter (or range)	No. of stems/ individuals	Crown Spread North	Crown Spread South	Crown Spread East	Crown Spread West	Lowest Branch Height	Lowest Branch Direction	Maturity	Condition	Comments on form, condition, health and significant defects	Management recommendations in current context	BS 5837 Quality Category	Estimated Remaining Contribution
		(m)	(m)	(mm)	arising below 1.5m	(m)	(m)	(m)	(m)	(m)	(N,S,E,W)	Young, Middle Age, Mature	Good, Fair, Poor, Veteran			A,B,C,U (1,2,3)	Long, Medium, Short, Very Short
T26	Sycamore	13.0	2.0	630	1	7.0	7.0	6.0	7.0	3.0	N	Mature	Good	On residential garden boundary; healthy; balanced form.		B ,1	Long
T27	Sycamore	16.0	2.0	1000	1	7.0	7.0	7.0	7.0	3.0	NW	Mature	Good	On residential garden boundary; healthy; balanced form; notably large tree.		A ,1, 2	Long
T28	Cherry plum	6.0	1.5	250	1	4.0	4.0	2.0	5.0	2.0	N	Mature	Fair	Unremarkable tree; wildlife value through fruit.		C ,1	Medium
T29	Cherry plum	7.0	2.0	280	1	4.0	4.0	6.0	1.0	2.0	NW	Mature	Good	Large for species; canopy suppressed by dead tree to west.		B ,1	Long
T30	Common hawthorn	5.0	2.0	237	5	3.0	3.0	3.0	2.0	2.0	NW	Middle Age	Dead			U	Very Short
T31	Pedunculate oak	9.0	1.5	1000	1	6.0	4.0	7.0	5.5	2.5	N	Mature	Good	Squat open grown tree. On something of an island in cultivated area with waterlogging to east. Dense ivy obscures main stem. Some large limbs removed with retained stubs to south. Further limb failures with splits and decay. Good vigour		A ,2, 3	Long
Groups																	
G1	Sycamore, Elder	2 to 4	1.0	100 to 150	2							Young to Middle Age	Good	Self seeded trees; unremarkable.		C ,1	Long
G2	Sycamore	5 to 6	1.0	100 to 120	4							Young	Good	Third party, multi-stemmed trees; some screening function to part of residential boundary but limited; unremarkable.		C ,1	Long
G3	Sycamore	6 to 7	2.0	100 to 150	2							Middle Age	Fair	Self seeded trees; unremarkable.		C ,1	Long
G4	Common hawthorn, Common apple	4 to 5	2.0	90 to 160	2							Young to Middle Age	Good	Third party trees; unremarkable.		C ,1	Long
G5	Himalayan birch, Wild cherry, Cherry plum, Weeping willow	4 to 6	2.0	100 to 280	4							Young to Middle Age	Good	Third party trees in linear grouping along garden boundary; screening function.		B ,1, 2	Long
G6	Sycamore, Horse chestnut, Common hawthorn, Leyland cypress, Common beech, Common ash, Hybrid black poplar, Elder, Silver lime	6 to 19	2.0	100 to 800	20							Middle Age to Mature	Good	Linear group of third party trees; hawthorn and elder understorey and edge trees with occasional natural regeneration of climax species; two large and notable limes at western end of group; screening function, amenity and habitat value.		B ,1, 2	Long
G7	Sycamore, Common hawthorn, Blackthorn, Elder	4 to 7	0.0	100 to 200	10							Middle Age to Mature	Mixed	Occasional dead stems; generally scrubby looking trees with gaps in canopy cover; wildlife value.		C ,1, 2	Long
G8	Common hawthorn, Elder	4 to 6	0.0	100 to 250	40							Middle Age to Mature	Mixed	Outgrown hedgerow with larger stems than adjoining sections; greater collective value as dense belt of vegetation with habitat value.		B ,2	Long
G9	Common hawthorn, Elder	4 to 5	0.0	100 to 200	30							Middle Age	Mixed	Outgrown hedgerow with stems generally in fair condition with occasional dead top than adjoining sections; habitat value.		C ,1, 2	Long
G10	Sycamore, Common hawthorn, English holly, Blackthorn, Elder	4 to 6	0.0	100 to 220	50							Middle Age	Mixed	Outgrown hedge; predominantly stems in fair condition with canopy dieback and low vigour; numerous dead trees.		C ,1, 2	Medium
G11	Crack willow	7 to 8	0.0	200 to 600	2							Middle Age	Fair	Clump of willow sat in water filled ground depression; appears to be one larger multi stemmed tree and second smaller single stemmed tree; shoots displaying dieback.		C ,2	Medium
G12	Sycamore, Common hawthorn, Pin oak, Elder	4 to 6	0.0	100 to 220	40							Middle Age to Mature	Good	Outgrown sections of hedgerow with good vigour, providing broad and dense belt of canopy with wildlife and habitat value and connectivity of canopy cover.		B ,2	Long
G13	Sycamore, Common hawthorn, Elder	4 to 6	0.0	100 to 200	30							Middle Age	Good	Central section of outgrown hedge; generally less remarkable and vigorous than adjoining section (G12); still providing connectivity of canopy cover and wildlife and habitat value.		C ,1, 2	Long
G14	Sycamore, Common hawthorn, Turkey oak	11 to 18	0.0	110 to 800	35							Middle Age to Mature	Good	Shelter belt between field parcels; predominantly oaks, non- native species providing diversity to tree stock; limited access, dense understorey including outgrown hawthorn hedgerow.		B ,1, 2	Long
G15	Sycamore, Aspen, Goat willow, Crack willow	4 to 16	0.0	80 to 230	50							Young to Middle Age	Good	Dense group of water tolerant species around southern edge of pond; limited access; healthy looking trees providing edge habitat to larger tree group.		B ,2	Long
G16	Sycamore, Horse chestnut, Common hawthorn, White poplar, Turkey oak	6 to 21	0.0	200 to 850	25							Mixed Age	Good	Group characterised by several large mature oaks around pond; poplar, sycamore, oak and hawthorn regeneration around northern edge of group providing edge habitat; limited access.		A ,1, 2	Long
G17	Common hawthorn, Pin oak	4 to 6	0.0	30 to 100	10							Young to Middle Age	Good	Short section of outgrown hedge colonised by dogrose; oak regeneration and poplar suckers present.		C ,2	Long
G18	Sycamore, Horse chestnut, Common hawthorn, Aspen, Turkey oak, Crack willow, Common lime	5 to 21	0.5	130 to 700	25							Middle Age to Mature	Good	Broadleaf trees encircling pond; mostly mature individuals to north of pond; willow and aspen become dominant to south; crack willow failures, typical; limited access to south; occasional beech tree canopies showing dieback; outgrown hawthorn hedge to north.		B ,1, 2	Long
G19	Common beech, Pedunculate oak	6 to 6	1.0	150 to 200	2							Middle Age	Good	Regenerative, succesional trees in good health.		C ,1	Long

APPENDIX A: Arboricultural Survey Data Sheets



Surveyor **Angus Blankenstein**
 Survey Date **22.02.24**
 Site **Raby Park Road, Neston**
 Drawing Ref **D10381.400**

Italicised Feature Ref: Inspection of this feature was restricted
Italicised Values: Feature value was estimated

Ref	Species	Height	Canopy Ground Clearance	Stem Diameter (or range)	No. of stems/ individuals	Crown Spread North	Crown Spread South	Crown Spread East	Crown Spread West	Lowest Branch Height	Lowest Branch Direction	Maturity	Condition	Comments on form, condition, health and significant defects	Management recommendations in current context	BS 5837 Quality Category	Estimated Remaining Contribution
		(m)	(m)	(mm)	arising below 1.5m	(m)	(m)	(m)	(m)	(m)	(N,S,E,W)	Young, Middle Age, Mature	Good, Fair, Poor, Veteran			A,B,C,U (1,2,3)	Long, Medium, Short, Very Short
G20	Common ash, Pedunculate oak, Goat willow	3 to 8	0.0	80 to 350	70							Young to Middle Age	Good	Large swathe of willow growing across dried up pond; dense group with limited access; healthy.		B ,2	Long
G21	Sycamore, Common hawthorn, Leyland cypress, White poplar, Pedunculate oak	5 to 17	0.0	150 to 700	80							Middle Age to Mature	Good	Shelter belt group with many large, mature oaks; tree generally becoming less mature and prominent to north; screening function along boundary; amenity, landscape and habitat value.		B ,1, 2	Long
G22	Sycamore, Common hawthorn	6 to 11	0.0	120 to 300	15							Middle Age	Good	Roadside trees forming part of wider tree belt; generally unremarkable; screening function.		C ,1, 2	Long
G23	Sycamore, Pedunculate oak	12 to 15	0.5	300 to 600	10							Middle Age to Mature	Good	Roadside trees forming shelter belt with screening function.		B ,1, 2	Long
G24	Turkey oak	20 to 22	1.0	700 to 750	2							Mature	Good	Two large trees forming single canopy.		A ,1, 2	Long
G25	Horse chestnut, Common hawthorn, Common beech, Turkey oak	10 to 17	1.0	250 to 650	40							Middle Age to Mature	Good	Broad roadside group characterised by large oaks; very limited access and inspection; occasional standing dead stems with habitat value.		B ,1, 2	Long
G26	Common hawthorn, Pin oak	4 to 6	0.0	75 to 200	6							Young to Middle Age	Mixed	Outgrown hedgerow with oak regeneration.		C ,1	Medium
G27	Sycamore, Common hawthorn, Common ash, Pedunculate oak	6 to 15	0.0	150 to 850	30							Middle Age to Mature	Mixed	Shelter belt group along field boundary; generally good health and condition; Chelsea Ash die back symptoms		B ,1, 2	Long
G28	Sycamore, White poplar, Turkey oak, Crack willow, Common lime	6 to 18	0.0	150 to 800	100							Middle Age to Mature	Good	Woodland type composition; very limited access internally; group may contain high quality trees; notable area of canopy cover in the landscape with wildlife and habitat value.		B ,1, 2	Long
G29	Sycamore, White poplar	10 to 17	0.0	300 to 700	35							Middle Age to Mature	Good	Predominantly poplar; occasional limb failures; good health and condition overall; amenity value; dense understorey with habitat value.		B ,1, 2	Long
G30	Silver birch, Common ash, White poplar, Wild cherry, Goat willow	4 to 10	0.0	100 to 250	30							Young to Middle Age	Mixed	Generally unremarkable boundary trees but healthy and developing well; screening function; Chalara ash dieback symptoms.		C ,1, 2	Long
G31	White poplar, Pin oak, Pedunculate oak, Crack willow	10 to 18	0.0	200 to 480	8							Middle Age	Good	Linear belt of oaks along course of old footpath with occasional willow and poplar; greater collective value as single canopy area.		B ,2	Long
G32	Sycamore, Silver birch, Common ash, Aspen, Pedunculate oak	5 to 19	0.0	90 to 650	200							Mixed Age	Good	Assumed third party trees; no access, only edge surveyed; good health and condition; notable area of canopy cover with tree stock.		B ,1, 2	Long
G33	Sycamore, Common hawthorn, English holly, Cherry plum, Elder	4 to 7	0.0	100 to 250	10							Young to Middle Age	Mixed	Unremarkable boundary trees; screening function.		C ,1, 2	Long
G34	Sycamore, Horse chestnut, Common hawthorn, Common ash, English holly, Field elm	5 to 18	0.0	100 to 600	100							Mixed Age	Good	Canopy edge of wider woodland area; limited access; assumed third party ownership; good health and condition; notable area of tree cover within locality.		B ,1, 2	Long
G35	Common beech	10 to 17	2.0	200 to 800	100							Middle Age to Mature	Good	Third party trees; no access; only boundary trees observed; forming part of wider area of tree cover.		B ,1, 2	Long
G36	Sycamore, Horse chestnut, Common hawthorn, Common beech, Hybrid black poplar, Lombardy poplar	7 to 21	1.0	200 to 750	50							Middle Age to Mature	Good	Third party trees along boundary; established screening; no significant defects observed.		B ,1, 2	Long
G37	Common hawthorn, Wych elm	5 to 7	0.0	75 to 200	5							Young to Middle Age	Good	Self seeded and unremarkable trees along boundary.		C ,1	Long
G38	Common hawthorn	4 to 6	1.0	150 to 250	30							Middle Age	Fair	Lapsed agricultural hedgerow; many dead and declining stems.		C ,1, 2	Medium
G39	Common hawthorn	1.5 to 3	0.0	75 to 150	25							Middle Age	Fair	Various sections of outgrown lapsed hedge. Heavily overgrown with bramble. Surveyed from adjacent field		C ,2	Medium
G40	Sycamore, Silver birch, Common hawthorn, English holly, Pedunculate oak	4 to 11	0.5	75 to 300	30							Middle Age	Fair	Screening group between site and cemetery. Some multistemmed forms. Dense undergrowth.		B ,2	Long
G41	Sycamore, Silver birch, English holly, Pedunculate oak	3 to 10	1.0	240 to 310	12							Middle Age	Fair	Screening group between site and cemetery. Quite open spacing with smaller trees and some coppice between the large ones. Signs of rehaul management		B ,2	Long
Woodlands W1	Sycamore, Horse chestnut, Common hawthorn, Common beech, Common ash, English holly, White poplar, Pedunculate oak, Elder, Wych elm	4 to 18		120 to 700	150							Middle Age to Mature	Mixed	Edge of wider woodland extending to east; numerous standing dead trees presenting habitat value; Chalara ash dieback symptoms; generally in good health and condition; notable area of canopy cover in landscape.		B ,1, 2, 3	Long
Hedges																	



APPENDIX A: Arboricultural Survey Data Sheets

Surveyor Angus Blankenstein
 Survey Date 22.02.24
 Site Raby Park Road, Neston
 Drawing Ref D10381.400

Italicised Feature Ref: Inspection of this feature was restricted
Italicised Values: Feature value was estimated

Ref	Species	Height	Canopy Ground Clearance	Stem Diameter (or range)	No. of stems/ individuals	Crown Spread North	Crown Spread South	Crown Spread East	Crown Spread West	Lowest Branch Height	Lowest Branch Direction	Maturity	Condition	Comments on form, condition, health and significant defects	Management recommendations in current context	BS 5837 Quality Category	Estimated Remaining Contribution
		(m)	(m)	(mm)	arising below 1.5m	(m)	(m)	(m)	(m)	(m)	(N,S,E,W)	Young, Middle Age, Mature	Good, Fair, Poor, Veteran			A,B,C,U (1,2,3)	Long, Medium, Short, Very Short
H1	Sycamore, Blackthorn, Elder	1 to 2		n/a	n/a							Middle Age	Good	Broad and dense agricultural hedgerow; becoming very slightly outgrown with no recent management; bounds PRow to north; provides connectivity between tree cover to east and west with habitat and wildlife value; screening function to residential property to north/		n/a	Long
H2	Lawson cypress, Common hawthorn	2 to 3	1.0	n/a	n/a							Middle Age	Fair	Short section of hedgerow along residential garden boundary; inherent wildlife value but not noteworthy.		n/a	Long
H3	Common hawthorn	2 to 3		n/a	n/a							Middle Age	Good	Residential garden boundary hedge; screening function; inherent wildlife value but not noteworthy.		n/a	Long
H4	Lawson cypress	2 to 2		n/a	n/a							Middle Age	Good	Hedge bounding residential garden.		n/a	Long
H5	Common hawthorn, Elder	2 to 2.5		n/a	n/a							Middle Age to Mature	Fair	Lapsed remnants of former hedgerow; some larger stems.		n/a	Long
H6	Common hawthorn, Elder	1.5 to 2		n/a	n/a							Middle Age	Good	Predominantly hawthorn hedge along residential garden boundary; screening function.		n/a	Long
H7	Garden privet	4 to 5		n/a	n/a							Middle Age	Good	Residential boundary hedge.		n/a	Long
H8	Sycamore, Horse chestnut, Common hawthorn, Common beech, Yew, Wych elm	4 to 5		n/a	n/a							Middle Age	Good	Predominantly beech hedgerow around residential garden; well established screening function.		n/a	Long