

## Arboricultural Appraisal Chester Road, Hartford

1.1. This drawing presents an overview of the existing trees within influencing distance of the survey area. It also summarises the results of desktop searches for any designations, legal and regulatory restrictions or special status of relevance to arboriculture.

### Survey Area

1.2. The area of interest comprises agricultural and pastoral land to the north of the A556 Chester Road near Hartford. It is bounded to the north and east by railway lines, Littledales Lane to the west and the rear gardens of properties off Chester Road to the south.

### Survey results

1.3. 31 individual trees, 32 groups of trees, 2 woodland compartments and 9 hedges were recorded within influencing distance of the site.

1.4. The eastern half of the site comprises cultivated cropland, separated by hedges containing occasional mature trees. There are five areas of regenerating woodland (G14, G20, G21, G23 and G24) growing around abandoned field ponds.

1.5. The northern and eastern boundaries are formed by railway lines. The northern boundary embankment contains several groups of visually dominant mature oak, ash and alder, and scrub of hawthorn and elder and tall ruderal herbs. These overhang the site. The eastern cutting has younger regenerating scrub of silver birch, pedunculate oak, hawthorn, goat willow and elder. These do not overhang the site.

1.6. The western half of the site is more arboriculturally interesting comprising a network mature hedges containing trees and native-species woodlands that act as strong wildlife corridors around unmanaged grassland containing numerous open grown oak trees. Of these, trees T15, T19, T20, T21 have early veteran characteristics and are particularly valuable in the landscape and as an ecological resource.

1.7. Trees have been categorised in accordance with BS 5837 to describe their arboricultural, landscape or cultural qualities: A (high quality), B (moderate quality) C (low quality) and U (unsuitable for retention). The categorisation of tree quality allows a weighting to be given to each tree within the context of proposed development but is not prescriptive. Hedgerows are not categorised.

1.8. A Root Protection Area (RPA) has been calculated in accordance with BS 5837. This is based on each tree's stem diameter at 1.5 metres and has been adjusted where necessary to most accurately represent the likely spread of roots in consideration of prevailing conditions. The RPA represents the minimum area around each tree that must be left undisturbed to ensure its survival.

1.9. Feature locations, their quality categories, canopy spreads and root protection areas are shown on Insets 1 and 2. All arboricultural information recorded during the survey is presented at Appendix A.

### Desktop Searches

1.10. Cheshire West and Chester Council's online mapping confirmed that trees in the south-west corner of the site, and one small group towards the centre of the south-west quadrant are protected by Tree Preservation Order (Ref: V/71/000058/ORD). None of the trees are within a Conservation Area.

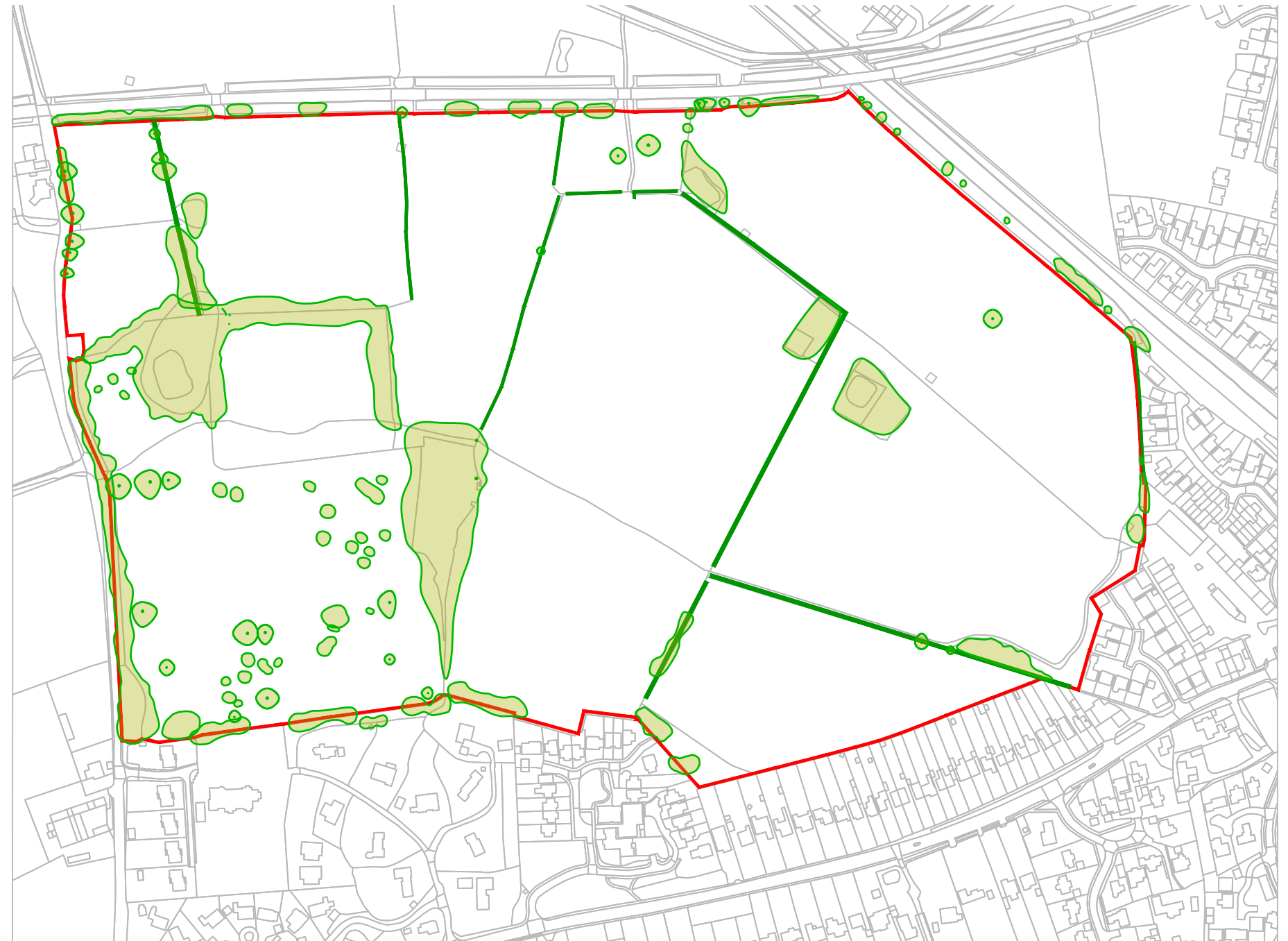
1.11. Natural England's Ancient Woodland Inventory (Provisional) for England contains no records for the site.

1.12. There are no veteran trees which could be affected by development of the site but several of the mature oak trees have early veteran characteristics.

1.13. The site is within the Mersey Community Forest.

1.14. There are no mapped arboreal Habitats of Principal Importance (Deciduous Woodland, Wood Pasture and Parkland, and Traditional Orchard) on the site. The majority of the hedges meet the description of HoPI Hedgerow.

1.15. No assessment of the presence of protected species has been made during the production of this drawing. Features of possible interest that were observed incidentally during the tree survey are recorded in Appendix A.



### KEY

[This drawing must be reproduced in colour]

-  Existing Trees
-  Existing Hedgerow
-  Survey Boundary
-  Inset frame



Reproduced by permission of Ordnance Survey on behalf of Her Majesty's Stationery Office.

© Crown Copyright and database right 2010. All rights reserved.  
OS LICENCE NUMBER 0100057890

Rev	Description	Drawn	Approved	Date



**THE ENVIRONMENT PARTNERSHIP**

401 Faraday Street, Birchwood Park, Warrington WA3 6GA  
Tel 01925 844004 e-mail tep@tep.uk.com www.tep.uk.com

Project

Cheshire West Site Promotion - Chester Road, Hartford

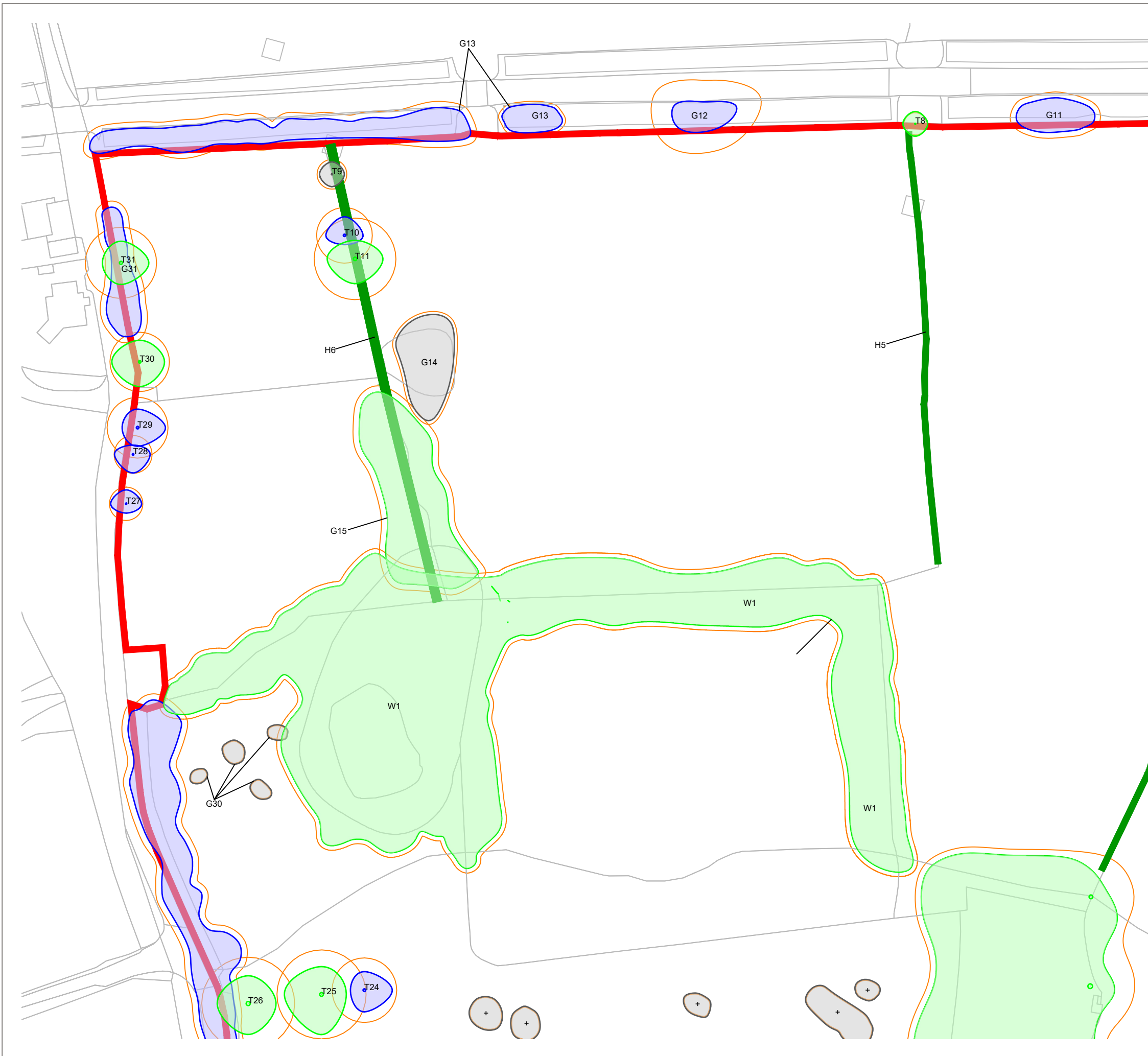
Title

Arboricultural Appraisal - Overview

Drawing Number

D10381.200

Drawn	Checked	Approved	Scale	Date
JGS	RMG	FBH	1:4,000 @ A3	26/02/2024



**KEY**

[This drawing must be reproduced in colour]

- T1/G1/W1 Trees
- H1 Hedgerow
- Root Protection Area (RPA)
- Survey Boundary

**Tree Quality Categorisation**  
 (Based on BS 5837:2012 Trees in relation to design, demolition and construction - Recommendations)

- Category A (High quality)
- Category B (Moderate quality)
- Category C (Low quality)
- Category U (Unsuitable for retention)
- Hedgerow (Not categorised)

**NOTES:**  
 This drawing should be read in conjunction with the respective Arboricultural Survey Data (Appendix A).  
 All tree and hedgerow locations and canopy extents are estimated through a combination of on-site observation and aerial photography.



Reproduced by permission of Ordnance Survey on behalf of Her Majesty's Stationery Office.  
 © Crown Copyright and database right 2010. All rights reserved.  
 OS LICENCE NUMBER 0100057890

Rev	Description	Drawn	Approved	Date

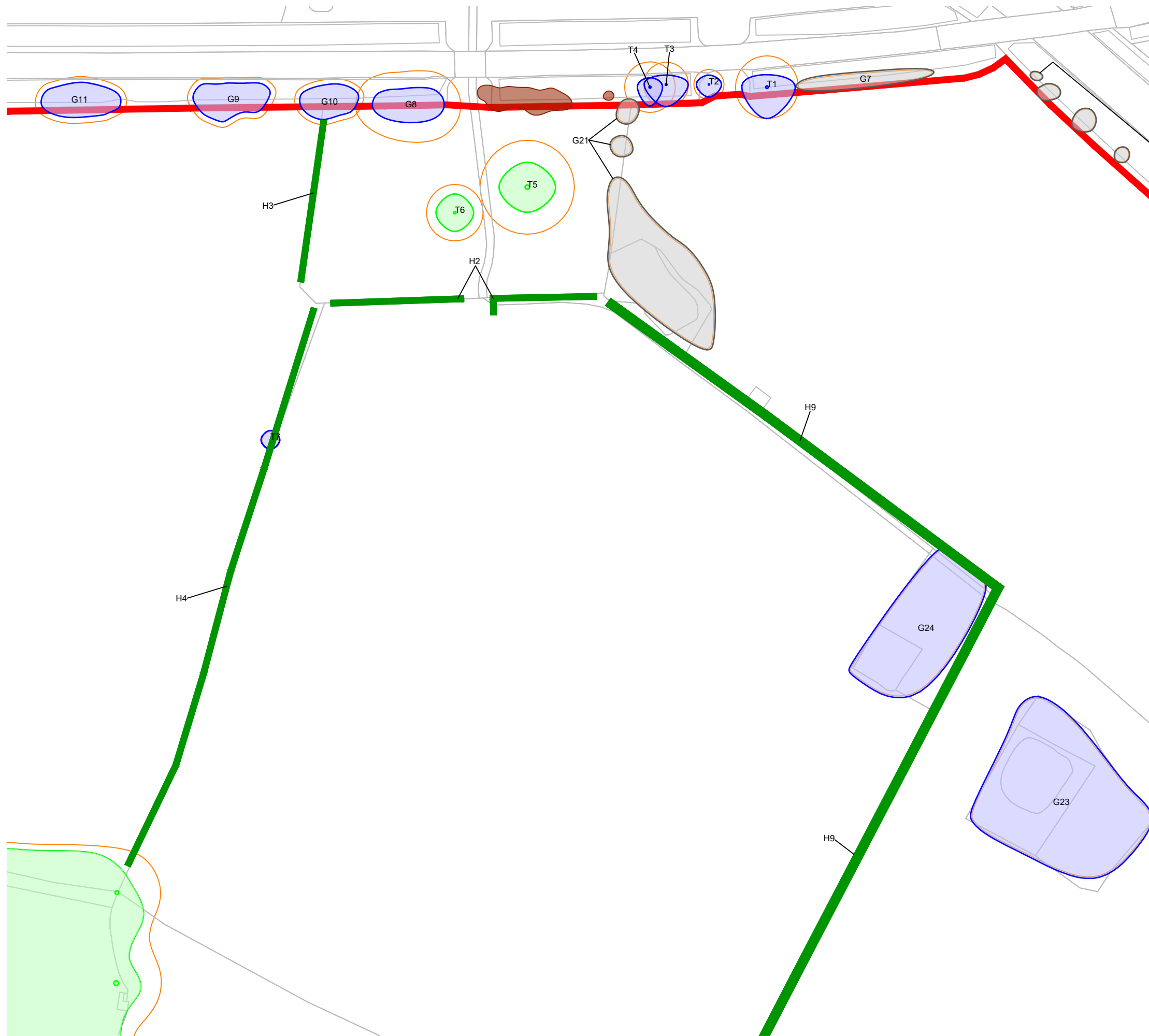
**TEP** | **THE ENVIRONMENT PARTNERSHIP**  
 401 Faraday Street, Birchwood Park, Warrington WA3 6GA  
 Tel 01925 844004 e-mail tep@tep.uk.com www.tep.uk.com

Project  
**Cheshire West Site Promotion - Chester Road, Hartford**

Title  
**Arboricultural Appraisal - Inset 1 of 6**

Drawing Number  
**D10381.201**

Drawn	Checked	Approved	Scale	Date
JGS	RMG	FBH	1:1,250 @ A3	26/02/2024



### KEY

[This drawing must be reproduced in colour]

- T1/G1/W1 Trees
- H1 Hedgerow
- Root Protection Area (RPA)
- Survey Boundary
- Tree Preservation Order

**Tree Quality Categorisation**  
 (Based on BS 5837:2012 Trees in relation to design, demolition and construction - Recommendations)

- Category A (High quality)
- Category B (Moderate quality)
- Category C (Low quality)
- Category U (Unsuitable for retention)
- Hedgerow (Not categorised)

**NOTES:**

This drawing should be read in conjunction with the respective Arboricultural Survey Data (Appendix A).

All tree and hedgerow locations and canopy extents are estimated through a combination of on-site observation and aerial photography.



Reproduced by permission of Ordnance Survey on behalf of Her Majesty's Stationery Office.

© Crown Copyright and database right 2010. All rights reserved.  
 OS LICENCE NUMBER 0100057890

Rev	Description	Drawn	Approved	Date



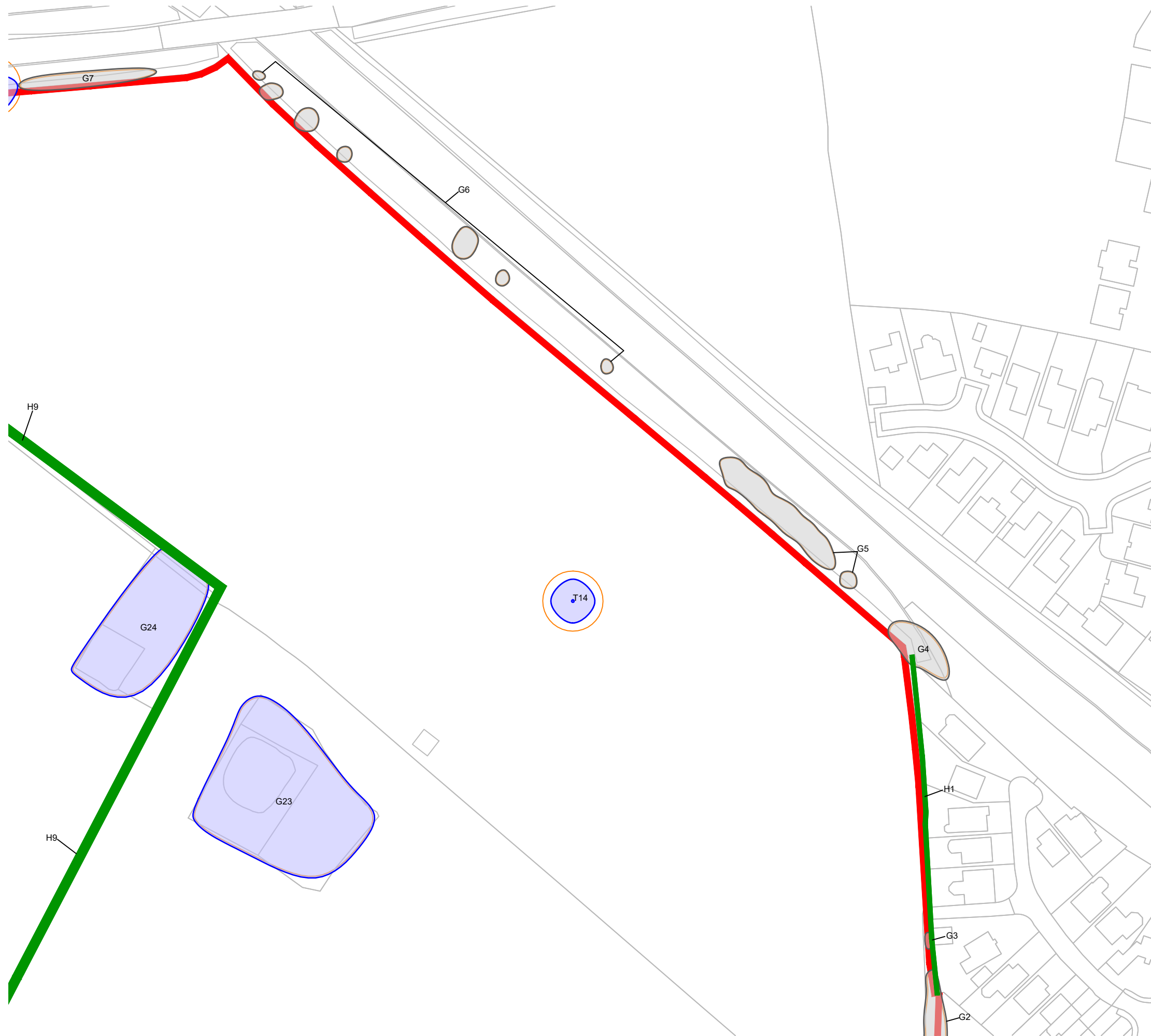
401 Faraday Street, Birchwood Park, Warrington WA3 6GA  
 Tel 01925 844004 e-mail tep@tep.uk.com www.tep.uk.com

Project  
**Cheshire West Site Promotion - Chester Road, Hartford**

Title  
**Arboricultural Appraisal - Inset 2 of 6**

Drawing Number  
**D10381.202**

Drawn	Checked	Approved	Scale	Date
JGS	RMG	FBH	1:1,250 @ A3	26/02/2024



## KEY

[This drawing must be reproduced in colour]

- T1/G1/W1 Trees
- H1 Hedgerow
- Root Protection Area (RPA)
- Survey Boundary
- Tree Preservation Order

### Tree Quality Categorisation

(Based on BS 5837:2012 Trees in relation to design, demolition and construction - Recommendations)

- Category A (High quality)
- Category B (Moderate quality)
- Category C (Low quality)
- Category U (Unsuitable for retention)
- Hedgerow (Not categorised)

### NOTES:

This drawing should be read in conjunction with the respective Arboricultural Survey Data (Appendix A).

All tree and hedgerow locations and canopy extents are estimated through a combination of on-site observation and aerial photography.



Reproduced by permission of Ordnance Survey on behalf of Her Majesty's Stationery Office.

© Crown Copyright and database right 2010. All rights reserved.  
OS LICENCE NUMBER 0100057890

Rev	Description	Drawn	Approved	Date



**THE ENVIRONMENT PARTNERSHIP**

401 Faraday Street, Birchwood Park, Warrington WA3 6GA  
Tel 01925 844004 e-mail tep@tep.uk.com www.tep.uk.com

### Project

Cheshire West Site Promotion - Chester Road, Hartford

### Title

Arboricultural Appraisal - Inset 3 of 6

### Drawing Number

D10381.203

Drawn	Checked	Approved	Scale	Date
JGS	RMG	FBH	1:1,250 @ A3	26/02/2024



### KEY

[This drawing must be reproduced in colour]

- T1/G1/W1 Trees
- H1 Hedgerow
- Root Protection Area (RPA)
- Survey Boundary
- Tree Preservation Order

### Tree Quality Categorisation

(Based on BS 5837:2012 Trees in relation to design, demolition and construction - Recommendations)

- Category A (High quality)
- Category B (Moderate quality)
- Category C (Low quality)
- Category U (Unsuitable for retention)
- Hedgerow (Not categorised)

### NOTES:

This drawing should be read in conjunction with the respective Arboricultural Survey Data (Appendix A).

All tree and hedgerow locations and canopy extents are estimated through a combination of on-site observation and aerial photography.



Reproduced by permission of Ordnance Survey on behalf of Her Majesty's Stationery Office.

© Crown Copyright and database right 2010. All rights reserved.  
OS LICENCE NUMBER 0100057890

Rev	Description	Drawn	Approved	Date



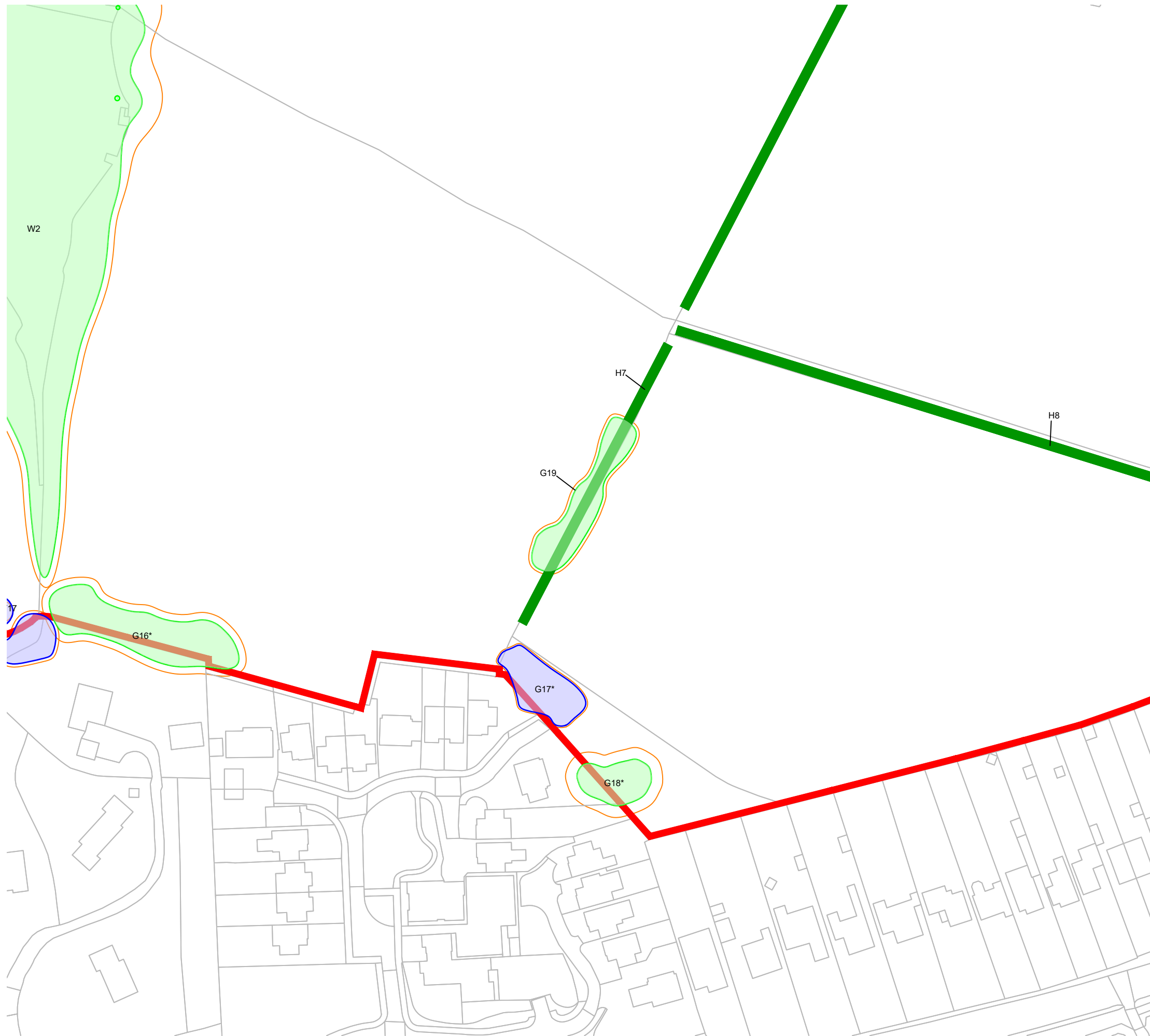
401 Faraday Street, Birchwood Park, Warrington WA3 6GA  
Tel 01925 844004 e-mail tep@tep.uk.com www.tep.uk.com

Project  
**Cheshire West Site Promotion - Chester Road, Hartford**

Title  
**Arboricultural Appraisal - Inset 4 of 6**

Drawing Number  
**D10381.204**

Drawn	Checked	Approved	Scale	Date
JGS	RMG	FBH	1:1250 @ A3	26/02/2024



### KEY

[This drawing must be reproduced in colour]

- T1/G1/W1 Trees
- H1 Hedgerow
- Root Protection Area (RPA)
- Survey Boundary
- Tree Preservation Order

### Tree Quality Categorisation

(Based on BS 5837:2012 Trees in relation to design, demolition and construction - Recommendations)

- Category A (High quality)
- Category B (Moderate quality)
- Category C (Low quality)
- Category U (Unsuitable for retention)
- Hedgerow (Not categorised)

### NOTES:

This drawing should be read in conjunction with the respective Arboricultural Survey Data (Appendix A).

All tree and hedgerow locations and canopy extents are estimated through a combination of on-site observation and aerial photography.



Reproduced by permission of Ordnance Survey on behalf of Her Majesty's Stationery Office.

© Crown Copyright and database right 2010. All rights reserved.  
OS LICENCE NUMBER 0100057890

Rev	Description	Drawn	Approved	Date



**THE ENVIRONMENT PARTNERSHIP**

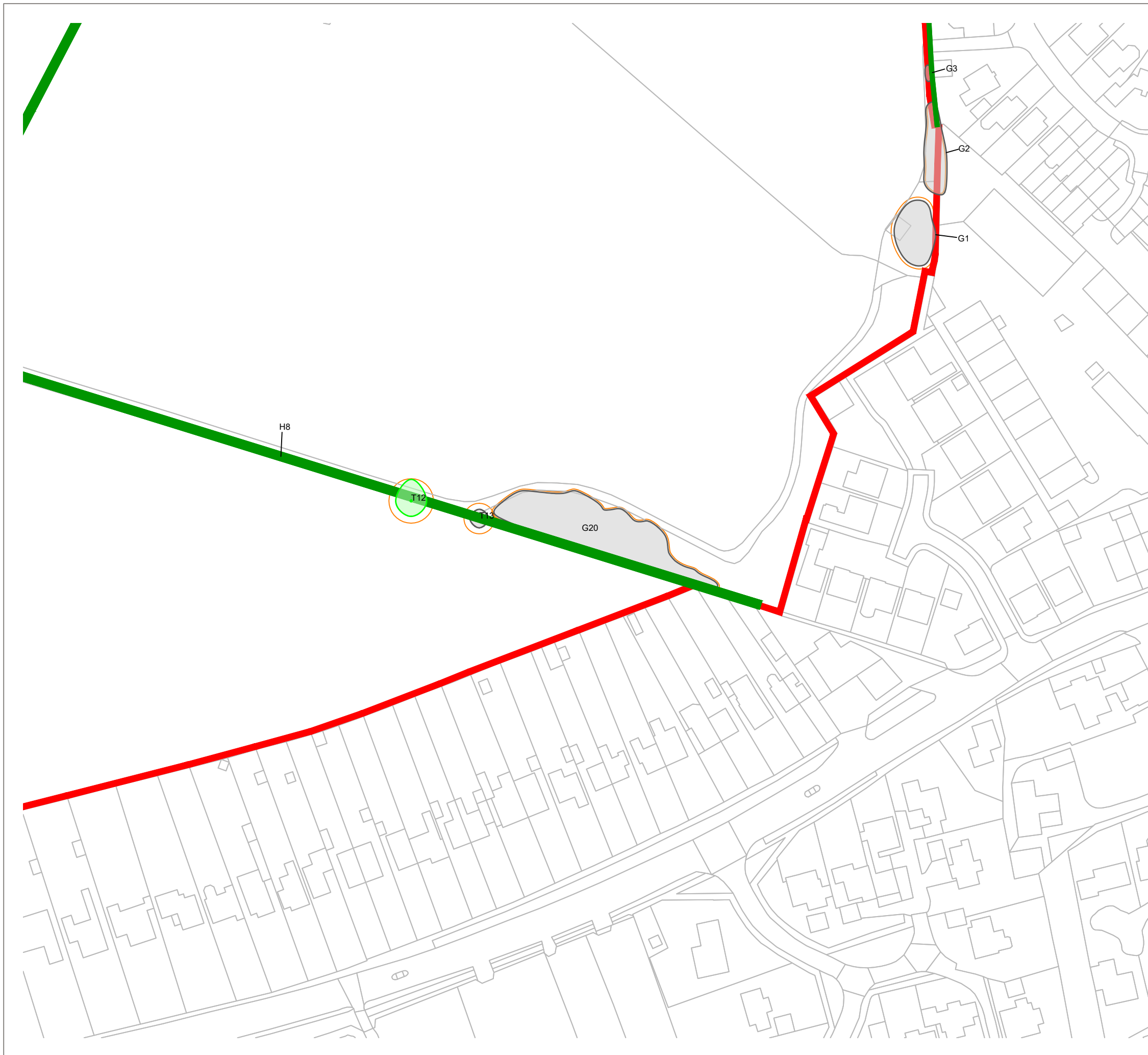
401 Faraday Street, Birchwood Park, Warrington WA3 6GA  
Tel 01925 844004 e-mail [tep@tep.uk.com](mailto:tep@tep.uk.com) www.[tep.uk.com](http://tep.uk.com)

Project  
**Cheshire West Site Promotion - Chester Road, Hartford**

Title  
**Arboricultural Appraisal - Inset 5 of 6**

Drawing Number  
**D10381.205**

Drawn	Checked	Approved	Scale	Date
JGS	RMG	FBH	1:1250 @ A3	26/02/2024



### KEY

[This drawing must be reproduced in colour]

- T1/G1/W1 Trees
- H1 Hedgerow
- Root Protection Area (RPA)
- Survey Boundary
- Tree Preservation Order

### Tree Quality Categorisation

(Based on BS 5837:2012 Trees in relation to design, demolition and construction - Recommendations)

- Category A (High quality)
- Category B (Moderate quality)
- Category C (Low quality)
- Category U (Unsuitable for retention)
- Hedgerow (Not categorised)

### NOTES:

This drawing should be read in conjunction with the respective Arboricultural Survey Data (Appendix A).

All tree and hedgerow locations and canopy extents are estimated through a combination of on-site observation and aerial photography.



Reproduced by permission of Ordnance Survey on behalf of Her Majesty's Stationery Office.  
 © Crown Copyright and database right 2010. All rights reserved.  
 OS LICENCE NUMBER 0100057890

Rev	Description	Drawn	Approved	Date



401 Faraday Street, Birchwood Park, Warrington WA3 6GA  
 Tel 01925 844004 e-mail tep@tep.uk.com www.tep.uk.com

Project  
**Cheshire West Site Promotion - Chester Road, Hartford**

Title  
**Arboricultural Appraisal - Inset 6 of 6**

Drawing Number  
**D10381.206**

Drawn	Checked	Approved	Scale	Date
JGS	RMG	FBH	1:1250 @ A3	26/02/2024



Surveyor Jonathan Smith  
 Survey Date 26.02.24  
 Site Chester Road, Hartford  
 Drawing Ref D10381.200

APPENDIX A: Arboricultural Survey Data Sheets

*Italicised Feature Ref: Inspection of this feature was restricted*  
*Italicised Values: Feature value was estimated*

Ref	Species	Height (m)	Canopy Ground Clearance (m)	Stem Diameter (or range) (mm)	No. of stems/ individuals arising below 1.5m	Crown Spread North (m)	Crown Spread South (m)	Crown Spread East (m)	Crown Spread West (m)	Lowest Branch Height (m)	Lowest Branch Direction (N,S,E,W)	Maturity Young, Middle Age, Mature	Condition Good, Fair, Poor, Veteran	Comments on form, condition, health and significant defects	Management recommendations in current context	BS 5837 Quality Category A,B,C,U (1,2,3)	Estimated Remaining Contribution Long, Medium, Short, Very Short
<b>Trees</b>																	
T1	Pedunculate oak	17.0	2.0	835	5	4.0	10.0	9.0	8.0	1.0	SW	Mature	Fair	Multi stemmed vigorous mature tree growing on railway embankment offsite. Presumably former coppice regrowth. Not many cavities.		B , 1	Long
T2	Turkey oak	14.0	5.0	400	1	3.0	4.0	4.0	4.0	7.0	SW	Young	Good	Vigorous, growing on offsite on railway embankment.		B , 1	Long
T3	Pedunculate oak	18.0	3.0	594	2	3.0	7.0	7.0	7.0	5.0	S	Middle Age	Good	Twin stemmed roadside tree presume from coppice regrowth. Vigorous. Leaning slightly.		B , 1	Long
T4	Common alder	15.0	4.0	673	2	3.0	6.0	4.0	4.0	1.0	W	Mature	Fair	Main stem divides at 1.5m. Still vigorous. Growing on rail embankment.		B , 1	Medium
T5	Pedunculate oak	17.0	3.0	1400	1	8.0	8.0	9.0	9.0	5.0	E	Mature	Good	Open grown vigorous tree. Future veteran. Several major limbs. First signs of retrenchment.		A , 1, 2	Long
T6	Pedunculate oak	17.0	1.0	750	1	6.0	6.0	6.0	6.0	5.0	E	Mature	Good	Open grown vigorous tree. Several major limbs, with minor deadwood.		A , 1, 2	Long
T7	Turkey oak	7.0	3.0	220	1	3.0	3.0	3.0	3.0	3.0	N	Young	Fair	Young vigorous tree		B , 1	Long
T8	Pedunculate oak	7.0	1.0	300	1	4.0	4.0	4.0	4.0	3.0	N	Young	Good	Young vigorous tree growing in railway land on edge of site		A , 1	Long
T9	English holly	11.0	4.0	400	1	4.0	4.0	4.0	4.0	5.0	NW	Mature	Fair	Hedgerow Holly tree		C , 1	Medium
T10	Pedunculate oak	10.0	6.0	750	1	6.0	3.0	6.0	6.0	8.0	N	Mature	Fair	Mature oak subdominant to close neighbour. Linear tear from 3m to 6m. Overhanging site		B , 1	Long
T11	Pedunculate oak	13.0	3.0	1100	1	6.0	8.0	9.0	9.0	5.0	E	Mature	Good	Vigorous dominant tree growing just off site. Spreading crown.		A , 1, 2	Long
T12	Pedunculate oak	13.0	2.0	600	1	7.0	5.0	5.0	5.0	2.0	E	Middle Age	Good	Hedgerow tree. Vigorous		A , 1	Long
T13	Sycamore	7.0	3.0	412	3	3.0	3.0	3.0	3.0	3.0	N	Young	Fair	Young multi-stemmed tree. Vigorous but has been damaged by past trimming in hedge.		C , 1	Medium
T14	Pedunculate oak	11.0	1.0	800	1	7.0	7.0	7.0	7.0	4.0	N	Mature	Good	Reasonably vigorous tree growing in arable field. Some slight canopy retrenchment. Rootzone damaged by repeated cultivation and compaction associated with agriculture	Retain in wide root protection area to restore tree health after arable cultivation	B , 1	Long
T15	Pedunculate oak	14.0	2.5	1130	1	9.0	12.0	4.5	9.0	3.0	W	Mature	Fair	Open grown tree that has suffered substantial collapse of eastern crown. Large twin-stem union at 2m. Large tear wound and hollowing of southern stem. Multiple socket failures and fracture stubs in eastern and central crown; southern-most still attached. Veteran characteristics. Large amounts of deadwood on ground under canopy.		A , 1, 3	Long
T16	Pedunculate oak	4.0	0.5	310	1	4.0	4.0	4.0	4.0	0.5	W	Young	Fair	Unusual squat form with multi-stemmed union and horizontal branch structure at 1.5m. Presumed loss of leader but no visible wounding.		C , 1	Long
T17	Pedunculate oak	7.0	0.5	280	1	4.5	4.5	3.5	5.0	0.5	W	Middle Age	Good	Vigorous tree with good form.		B , 1	Long
T18	Crack willow	8.0	0.5	416	6	5.0	4.0	5.0	4.0	0.5	NE	Middle Age	Fair	Vigorous self-set tree. Multi-stemmed from 0.5m with western stem tear out leaving exposed heart wood.		C , 1	Short
T19	Sycamore	17.0	2.0	1280	1	7.5	8.0	9.0	8.5	2.5	N	Mature	Fair	A hulk of a tree with very large multi-stemmed union at 3m. Previous loss of central leader with large tear wound and possible cavity extending into main stem. Future veteran candidate but currently has a full intact crown.		A , 1, 3	Long
T20	Pedunculate oak	18.0	3.0	1120	1	10.0	9.0	8.0	11.0	3.5	W	Mature	Fair	A very large tree with broad spreading crown. Overall canopy health is Good. Loss of large limb from lower north-East crown leaving large tear stub. Large tear wound in Central crown on southern side. Small diameter deadwood present. Burrow entrance in northern buttress.		A , 1, 3	Long
T21	Pedunculate oak	17.0	1.0	1140	1	6.0	9.0	6.0	6.0	1.5	SE	Mature	Fair	Variable crown condition with multiple dead branches and fracture failures amongst areas of live foliage. Burring on main stem with area of decay at 2.5m on south-east Side. A potential future veteran candidate.		A , 3	Long
T22	Pedunculate oak	8.0	0.0	470	1	6.0	6.0	6.0	5.5	0.5	E	Middle Age	Poor	Vigorous self-set tree. Eastern crown has collapsed and is resting on the ground.		C , 1	Long
T23	Turkey oak	17.0	2.5	1200	1	7.0	12.0	11.0	8.0	4.0	SW	Mature	Good	Well formed open grown tree in good condition. Small diameter deadwood and branch failures commensurate with age.		A , 1	Long
T24	Pedunculate oak	16.0	2.5	870		6.0	7.0	9.0	4.5	5.0	NE	Mature	Fair	Large twin-stem union at 2.5m. Southern stem has snapped at 4m leaving a huge tear wound. Moderate deadwood in lower crown.		B , 1	Long
T25	Pedunculate oak	17.0	2.0	1200	1	9.0	13.0	8.0	12.0	5.0	W	Mature	Good	Well formed open grown tree in good condition. Small diameter deadwood and branch failures commensurate with age.		A , 1	Long

APPENDIX A: Arboricultural Survey Data Sheets



Surveyor Jonathan Smith  
 Survey Date 26.02.24  
 Site Chester Road, Hartford  
 Drawing Ref D10381.200

*Italicised Feature Ref: Inspection of this feature was restricted  
 Italicised Values: Feature value was estimated*

Ref	Species	Height	Canopy Ground Clearance	Stem Diameter (or range)	No. of stems/ individuals	Crown Spread North	Crown Spread South	Crown Spread East	Crown Spread West	Lowest Branch Height	Lowest Branch Direction	Maturity	Condition	Comments on form, condition, health and significant defects	Management recommendations in current context	BS 5837 Quality Category	Estimated Remaining Contribution
		(m)	(m)	(mm)	arising below 1.5m	(m)	(m)	(m)	(m)	(m)	(N,S,E,W)	Young, Middle Age, Mature	Good, Fair, Poor, Veteran			A,B,C,U (1,2,3)	Long, Medium, Short, Very Short
T26	Pedunculate oak	19.0	3.0	1300	1	9.0	10.0	9.0	10.0	3.5	S	Mature	Fair	Broad spreading roadside tree. Stem and scaffold branches heavily ivy clad. Large fracture stub in lower south-east crown from recent failure.		A , 1	Long
T27	Downy birch	15.0	2.5	450	1	4.5	3.0	5.0	0.0	2.5	NW	Mature	Good	Well formed open grown tree approaching final life stage. No significant visible defects.		B , 1	Medium
T28	Common beech	19.0	3.0	510	1	3.0	6.0	5.5	6.0	5.0	N	Middle Age	Good	One of a pair of maturing road side beech. Minor basal decay visible. Inspection restricted to adjacent road.		B , 1, 2	Long
T29	Common beech	19.0	3.0	820	1	6.0	6.0	9.0	5.0	5.0	NW	Middle Age	Fair	One of a pair of maturing road side beech. Stem lean and crown bias east. Basal stem wound and hollowing suspected on east side. Inspection restricted to adjacent road.		B , 1, 2	Long
T30	Pedunculate oak	14.0	4.0	800	1	7.0	8.0	8.0	9.0	3.5	E	Mature	Good	Well formed open grown tree in good condition. Small diameter deadwood and branch failures commensurate with age. Inspection restricted to adjacent road.		A , 1	Long
T31	Pedunculate oak	23.0	5.0	960	1	7.0	7.0	9.0	6.0	6.0	E	Mature	Good	Tall, dominant tree in roadside group with high crown. Ivy clad stem and scaffold limbs. Inspection restricted to adjacent road.		A , 1	Long
<b>Groups</b>																	
G1	Common hawthorn, Pedunculate oak, Elder	2 to 7	0.0	15 to 52	5							Young	Fair	Natural regeneration of mixed group beneath overhead pylon. Tall ruderal ground flora including large stand of Jap knotweed.	Clear knotweed. Maintain scrub in accordance with electricity safety standards.	C , 1	Medium
G2	Common hawthorn	4 to 7	1.0	10 to 25	8							Middle Age	Fair	Line of hawthorn growing at base of retaining wall, with some stems on top of wall. Japanese knotweed growing in the wall and on the lower ground. Tall ruderal ground flora.		C , 1	Medium
G3	Common ash	4 to 5	1.0	8 to 12	2							Young	Poor	Group of two multistemmed Ash. Evidence of dieback. At gable end of adjacent property.	Remove	C , 1	Short
G4	Common hawthorn	3 to 5	1.0	12 to 20	5							Middle Age to Mature	Good	Offsite group of hawthorn growing on railway cutting. Vigorous. Mammal path into site.		B , 1	Long
G5	Silver birch, Pedunculate oak	4 to 6	1.0	15 to 25	5							Mixed Age	Fair	Natural regeneration of Oak with occasional silver birch on railway cutting offsite. Some is coppice regrowth.		B , 1	Medium
G6	Silver birch, Common hawthorn, Pedunculate oak, Elder	4 to 6	1.0	15 to 25	20							Young	Good	Natural regeneration of Oak with occasional silver birch, elder and common hawthorn on railway cutting. Some is coppice regrowth.		B , 1	Medium
G7	Elder	3 to 5	1.0	8 to 20	8							Mature	Fair	Line of overmature elder on lower slopes of offsite railway embankment		C , 1	Medium
G8	Common ash	17 to 20	2.0	900 to 1010	2							Mature	Fair	Visually dominant trees growing at base of railway embankment. Inspection difficult due to slurry in field. Major basal cavity noted. Trees remain vigorous. Leaning slightly over site.		B , 1, 2	Medium
G9	Pedunculate oak	10 to 17	3.0	450 to 600	9							Mature	Fair	Group of 3 multistemmed trees, 2 oak and 1 Ash. Coppice regrowth on railway embankment. Overhanging site. Reasonably vigorous		B , 1, 2	Long
G10	Pedunculate oak	12 to 14	2.0	500 to 600	2							Mature	Good	Pair of multistemmed oak growing on railway embankment. Vigorous.		B , 1	Long
G11	Pedunculate oak	12 to 14	2.0	500 to 600	2							Mature	Good	Pair of multisemmed oak growing on railway embankment. Vigorous.		B , 1	Long
G12	Common ash	12 to 13	3.0	300 to 1100	2							Mature	Fair	2 multistemmed ash growing as coppice regrowth on railway embankment. Likely to have structural issues. High bat potential		B , 1	Medium
G13	Common ash	10 to 15	3.0	300 to 800	6							Mature	Fair	Several multistemmed ash growing as coppice regrowth on railway embankment. Likely to have structural issues. High bat potential in some trees		B , 1	Medium
G14	Downy birch, Pedunculate oak, Goat willow	3 to 8	1.0	100 to 300	12							Young	Good	Young natural regeneration in a dried up pond.		C , 1	Long
G15	Pedunculate oak	17 to 19	3.0	700 to 1200	6							Mature	Good	Mature line of pedunculate oak growing in a hedgeline. Strong landscape feature. Several future veterans. Linked to an offsite woodland.	Retain and protect.	A , 1, 2	Long
G16	Sycamore, Common ash	18 to 20	6.0	600 to 900	6							Mature	Mixed	5 sycamore growing in amenity grassland of adjacent residential development called Littledales Park. All vigorous and in apparent good condition, although not inspected. One multi-stemmed ash growing outside rear garden fence at the east of the group. Appears vigorous but not inspected in detail.	Inspect ash, retain if possible.	A , 1, 2	Long
G17	White willow, Goat willow	3 to 10	1.0	150 to 380	40							Young	Good	Group of willow, presumably mix of planting and natural regeneration associated with land taken for adjacent residential development some 25 years ago.		B , 1	Medium

APPENDIX A: Arboricultural Survey Data Sheets



Surveyor Jonathan Smith  
 Survey Date 26.02.24  
 Site Chester Road, Hartford  
 Drawing Ref D10381.200

*Italicised Feature Ref: Inspection of this feature was restricted  
 Italicised Values: Feature value was estimated*

Ref	Species	Height	Canopy Ground Clearance	Stem Diameter (or range)	No. of stems/ individuals	Crown Spread North	Crown Spread South	Crown Spread East	Crown Spread West	Lowest Branch Height	Lowest Branch Direction	Maturity	Condition	Comments on form, condition, health and significant defects	Management recommendations in current context	BS 5837 Quality Category	Estimated Remaining Contribution	
		(m)	(m)	(mm)	arising below 1.5m	(m)	(m)	(m)	(m)	(m)	(N,S,E,W)	Young, Middle Age, Mature	Good, Fair, Poor, Veteran			A,B,C,U (1,2,3)	Long, Medium, Short, Very Short	
G18	Common lime	22 to 24	3.0	800 to 900	3							Mature	Good	Group of 3 vigorous lime, growing off-site. Not possible to inspect due to fence and a number of beehives on the site.		A , 1	Long	
G19	Horse chestnut, Pedunculate oak, Field elm	7 to 12	2.0	300 to 500	4							Middle Age to Mature	Good	Line of 2 pedunculate oak and one horse chestnut in hedge. Some regenerating field elm.		A , 1	Long	
G20	Sycamore, Goat willow, Elder	2 to 6	1.0	150 to 350	20							Young	Good	Young regenerating willow and sycamore, elder and bramble with some outgrown hawthorn from adjacent hedge.		C , 1	Medium	
G21	Common alder, Goat willow	5 to 7	0.0	100 to 300	50							Middle Age	Fair	Group of regenerating willow and alder around an abandoned field pond.	Thin out to allow pond to be restored.	C , 1	Medium	
G23	Common hawthorn, Goat willow, Crack willow, Elder	5 to 8	0.0	100 to 300	100							Middle Age to Mature	Good	Vigorous group of crack willow, elder and hawthorn around former field pond. Pond not totally shaded.	Retain. Thin out to allow pond restoration. Plant some longer-term species.	B , 1	Long	
G24	Common hawthorn, Goat willow, Crack willow, Elder	5 to 7	0.0	100 to 350	100							Middle Age to Mature	Good	Vigorous group of crack willow, elder and hawthorn around two former field ponds, one which has long dried and become colonised by elder. Second pond very shaded.	Retain. Thin out to allow pond restoration. Plant some longer-term species.	B , 1	Long	
G25	Downy birch, Common beech, Sitka spruce, Portugal laurel, Pedunculate oak	6 to 13	4.0	280 to 600	35							Middle Age	Good	Intermittent row of maturing boundary trees located behind heras fencing. Possibly third party or shared ownership. Branches overhang application site by up to 8m.		B , 1, 2	Long	
G26	Pedunculate oak	6 to 8	0.5	270 to 420	11							Young to Middle Age	Good	Scattered self-set oaks in rough grassland. Many trees have the potential to develop into good quality trees over time.		C , 1, 2	Long	
G27	Wild cherry	8 to 11	1.0	110 to 270	25							Young to Middle Age	Good	Small copse likely formed from root sucker growth.		C , 2	Long	
G28	Sycamore, Corsican pine	8 to 15	2.0	350 to 780	5							Middle Age	Good	Central stand of 3 pines interspersed with sycamore forming the lower part of a collective crown outline.		B , 1, 2	Long	
G29	Pedunculate oak	4 to 7	0.5	190 to 420	20							Young to Middle Age	Good	Scattered self-set oaks in rough grassland. Many trees have the potential to develop into good quality trees over time.		C , 1, 2	Long	
G30	Pedunculate oak	4 to 6	0.5	200 to 230	5							Young to Middle Age	Good	Scattered self-set oaks in rough grassland. Many trees have the potential to develop into good quality trees over time.		C , 1, 2	Long	
G31	Sycamore, Common hawthorn, Pedunculate oak	5 to 17	1.0	180 to 840	8							Middle Age to Mature	Mixed	Short roadside group with scrubby hawthorn understory. Western half of central oak is dead. All stems ivy clad.		B , 2	Long	
G32	Sycamore, Common hawthorn, Pedunculate oak, Elder	5 to 17	1.0	220 to 750	50							Mixed Age	Good	Single row of roadside trees forming an avenue with those on the opposite side. contains several larger and better quality oak and sycamore. Most trees ivy clad.		B , 1, 2	Long	
<b>Woodlands</b>																		
W1	Pedunculate oak	10 to 15	2.0	250 to 600	150							Middle Age	Good	Shelterbelt planted around a former football pitch, now abandoned. Most trees appear to be c.30 years old, but there are one or two former hedgerow oak of greater stature and younger self-set trees at margins. Merges into woodland surrounding pond to west. Generally vigorous.		A , 1, 2	Long	
W2	Sycamore, Horse chestnut, Pedunculate oak, White willow, Crack willow, Elder	3 to 24	2.0	100 to 1800	250	Refer to drawing	Refer to drawing	Refer to drawing	Refer to drawing	Refer to drawing	Refer to drawing	Mature	Good	Dominant species is pedunculate oak, of which there are some exceptional specimens on the boundary overhanging the site. There is also some mature sycamore. Part of the woodland has been converted into a BMX track with quite substantial disturbance of earth within root zones. There is generally a vigorous understorey of elder and bramble, with occasional rhododendron	Retain and protect root protection area. There are two exceptional oak in NE corner of the site which require specific large buffer zones	A , 1, 2	Long	
<b>Hedges</b>																		
H1	Common hawthorn, Dog rose	1 to 2		n/a	n/a							Middle Age	Fair	Mammal path at railway end of hedge."		n/a	Long	
H2	Common hawthorn, Elder	2 to 3		n/a	n/a							Middle Age	Fair	Hawthorn dominated, with some elder. No apparent woodland ground flora. Base has tall ruderals. Cultivated to margin on S side. Unmown on north		n/a	Long	
H3	Common hawthorn, Elder	2 to 3		n/a	n/a							Middle Age	Fair	Hawthorn dominated, with some elder. No apparent woodland ground flora. Base has tall ruderals. Cultivated to margin on west side. Unmown on east		n/a	Long	
H4	Elder	2 to 3		n/a	n/a							Middle Age	Fair	Hawthorn dominated, with some elder. No apparent woodland ground flora. Base has tall ruderals. Cultivated to margin on both sides.		n/a	Long	
H5	Common hawthorn, Elder	2 to 4		n/a	n/a							Middle Age	Good	Hawthorn dominated, with some elder. No apparent woodland ground flora. Base has tall ruderals. Cultivated to margin on both sides.		n/a	Long	
H6	Common hawthorn, English holly, Elder	2 to 5	1.0	n/a	n/a							Mature	Good	Overgrown and unmanaged hedgerow that is gradually turning into a line of trees.		n/a	Long	



## APPENDIX A: Arboricultural Survey Data Sheets

Surveyor Jonathan Smith  
 Survey Date 26.02.24  
 Site Chester Road, Hartford  
 Drawing Ref D10381.200

*Italicised Feature Ref: Inspection of this feature was restricted*  
*Italicised Values: Feature value was estimated*

Ref	Species	Height	Canopy Ground Clearance	Stem Diameter (or range)	No. of stems/ individuals	Crown Spread North	Crown Spread South	Crown Spread East	Crown Spread West	Lowest Branch Height	Lowest Branch Direction	Maturity	Condition	Comments on form, condition, health and significant defects	Management recommendations in current context	BS 5837 Quality Category	Estimated Remaining Contribution
		(m)	(m)	(mm)	arising below 1.5m	(m)	(m)	(m)	(m)	(m)	(N,S,E,W)	Young, Middle Age, Mature	Good, Fair, Poor, Veteran			A,B,C,U (1,2,3)	Long, Medium, Short, Very Short
H7	Horse chestnut, Common hawthorn, Pedunculate oak, Elder, Field elm	1 to 3		n/a	n/a							Mature	Good	mixed field hedge with group of trees. No apparent woodland ground flora. Cultivated on both sides but a 1m margin has been left		n/a	Long
H8	Common hawthorn, English holly, Dog rose, Elder	1 to 3		n/a	n/a							Middle Age	Good	Robust mixed but species-poor hedge. No apparent woodland ground flora. Cultivated on both sides, with little field margin.		n/a	Long
H9	English holly, Dog rose, Elder	1 to 3		n/a	n/a							Middle Age	Good	Robust mixed but species-poor hedge. No apparent woodland ground flora. Cultivated on both sides, with little field margin.		n/a	Long